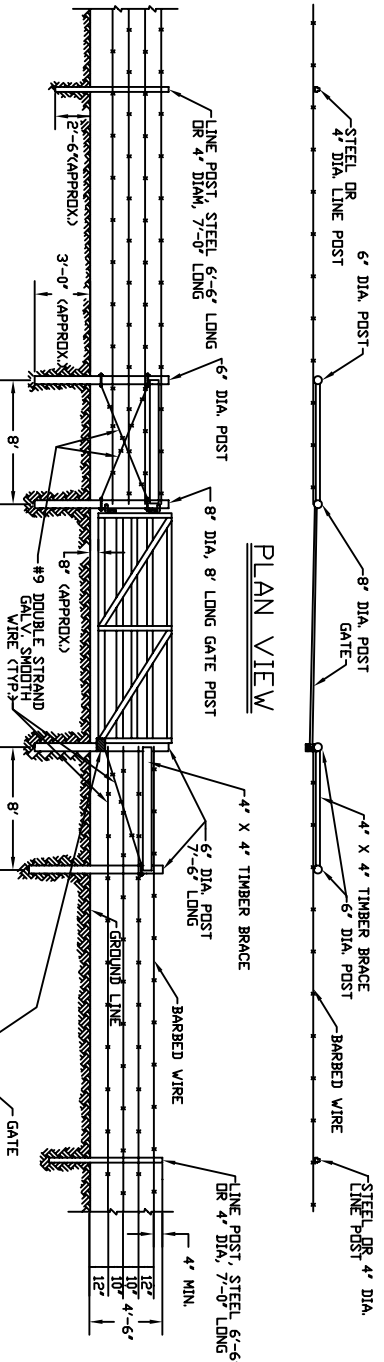
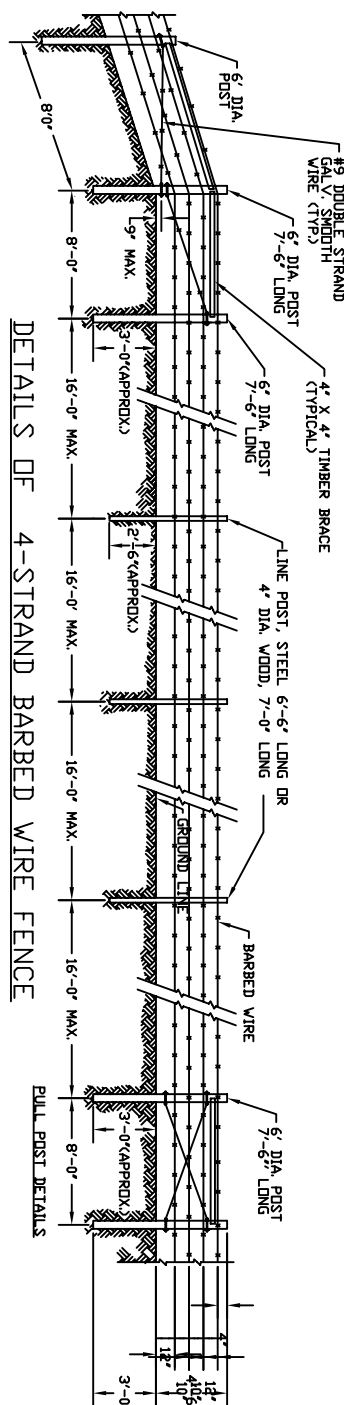
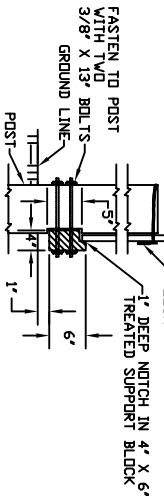


PLAN VIEW

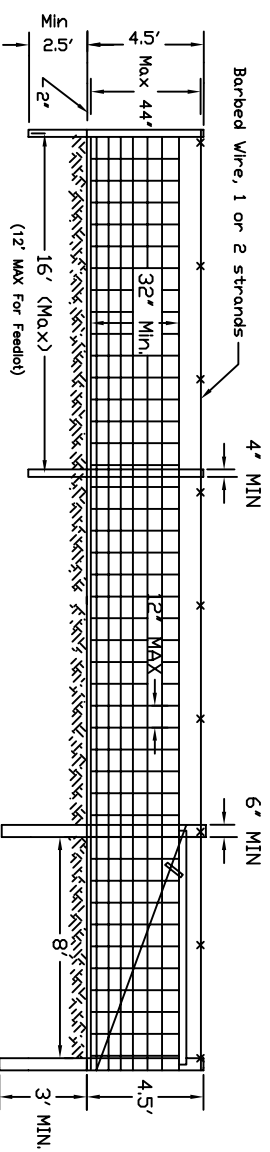


TYPICAL GATE SECTION



DETAILS OF 4-STRAND BARBED WIRE FENCE

NOTE: Use Corner and Direction Change Bracing and Pull Post Details the same as for Barbed Wire Fence Details



TYPICAL WOVEN WIRE FENCE DETAILS

CONSTRUCTION DETAILS

- POSTS:**
1. All posts shall be pressure treated. Steel line posts shall be galvanized steel posts.
 2. Always use wood posts for brace or corner posts.
 3. Drive steel posts until flange is buried.
 4. Place posts approximately: a) 8' apart for corner, gate, and pull post assemblies, b) 16' apart (maximum) when using woven or barbed wire.
 5. Drive or bury posts at least: a) 2' for in-line fences, b) 3' (minimum) where bracing will be required, c) 3' (minimum) in corners.
- BRACING:**
1. Use pull post assembly for middle bracing approximately every 650' with in-line fences.
 2. Use pull post assembly at gates, ends of fences, where the grade changes more than 15 degrees and the tension of the adjacent sections of wire is upward, and when alignment changes by 15 degrees or more.

FENCING:

1. Use galvanized woven wire, 14 gauge or heavier, 11 gauge or heavier for top and bottom wires, topped with at least one strand of barbed wire for control of hogs and sheep. Max. total height = 44".
2. Four strands of barbed wire 12½ gauge zinc coated or heavier with 14 gauge round 2-point barbs at approx 5" spacing may be used for controlling cattle or horses. Minimum height of 46".
3. Wire for bracing shall be No. 9 or heavier. Use 2 inch hardwood twist stock.
4. Staples shall be 9 gauge or heavier with a minimum length of 1½", except for high tensile use 1¾" with slash cut points.
5. Fencing shall be placed on the side of the post opposite the area to be protected, except that fencing shall be placed on the outside of curves.
6. High tensile wire shall meet the following: 12½ gauge or heavier, type III galvanized, with tensile strength 180,000 psi or greater. Use 6 strands minimum, and 8 strands for leadlots.
7. Always follow manufacturers recommendations.
8. Provide one stop-post for each gate in the open position.
9. Gates shall be galvanized steel similar in design to those shown in "Typical Steel Gates" drawings.
10. Gates shall be hung with bottom hinge pin turned up and top hinge pin turned down.

Use Drawing Sheet "Fencing Details and Quantities" to tabulate Material needs and quantities.

FENCING DETAILS

NAME: _____

LOCATION: _____

New Hampshire Department of Agriculture
Ag. Nutrient Management Grant Program

Designed G. Lang 4/05
Drawn _____
Title _____

Checked _____
Title _____

Sheet _____
Drawing No. _____

(NH_FENCE_DETAILS_2)